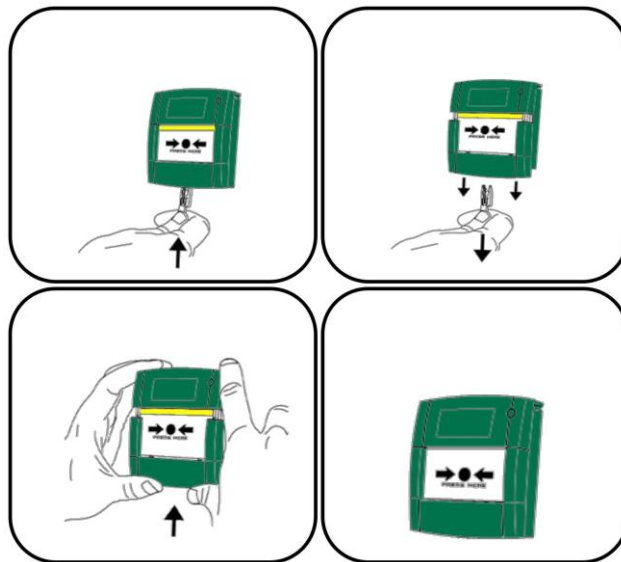




ACCESS CONTROL: HOW TO Reset Emergency Door Release

- 01 Insert the reset key with two prongs pointing upwards, into the bottom of the call point unit.
- 02 Pull the key downwards; the front portion of the call point unit will also move down
- 03 Push the front portion of the call unit back up
- 04 The yellow indicator should no longer be visible and your system should be working again



Your Reset Key – KEEP IT SAFE



ALMAS
INDUSTRIES

Technical Support

UK: 0333 567 6677 (24/7)

Ireland: 1800 336 842 (24/7)

Email: technical@almas-industries.com (Mon-Fri 8.30-5pm)