

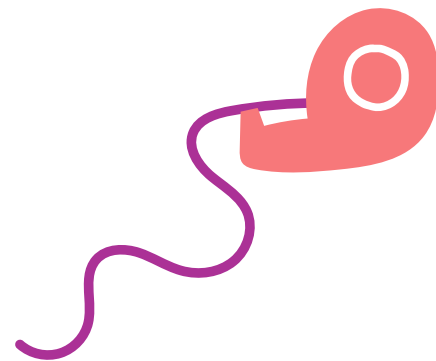
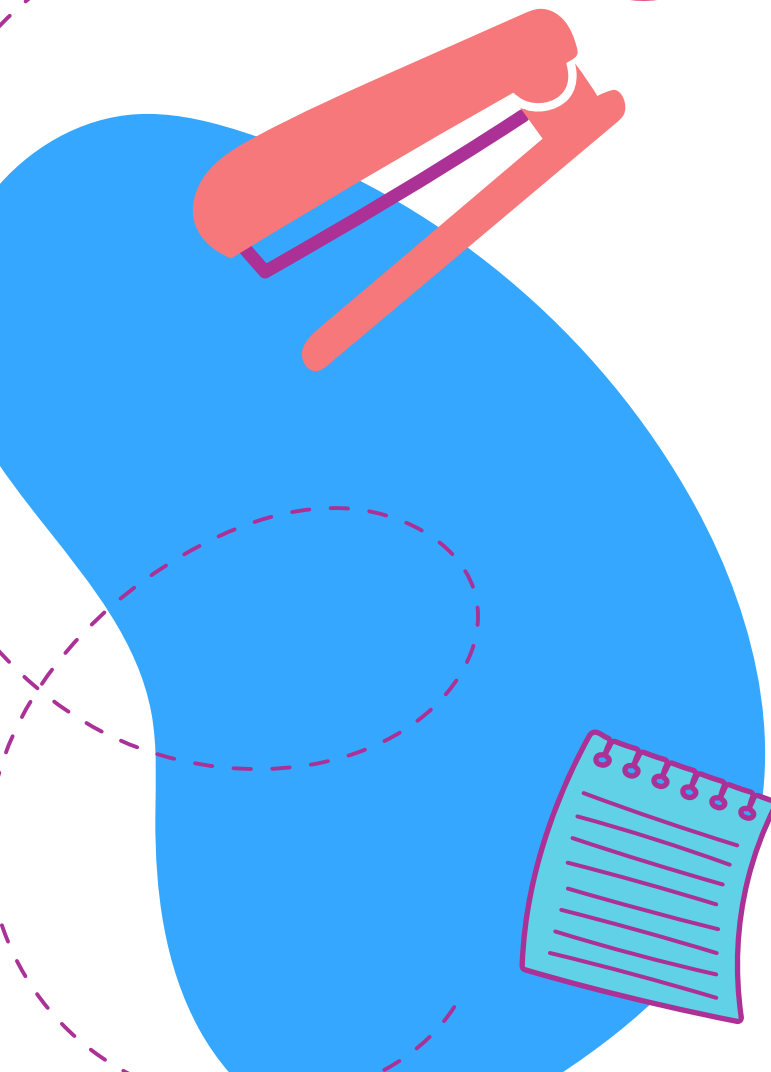


PARENTS'

Security



Onboarding



# How Do We Stop Security Breaches?

TOGETHER  
with a combination of



## GOOD TECHNOLOGY

We invest in the best systems for our nursery



## GOOD PROCESSES

We communicate security protocols to all staff and parents



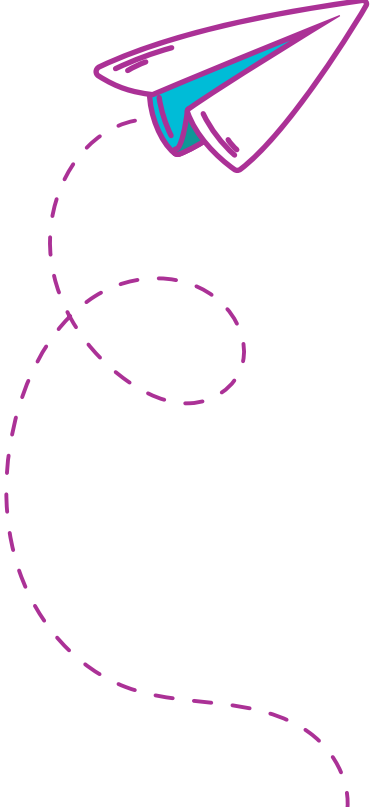
## CONSISTENCY

We all adhere to the security protocols, every time, every day



# Parent Security Protocols

To help us keep your child safe, (and every other parent's too) please adhere to the below procedures



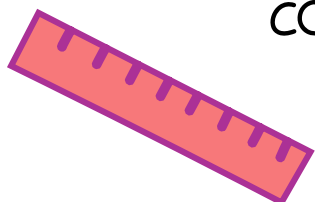
1) Never hold the door open for another person, even if you know them. Why? We need to know exactly who is on site, when.

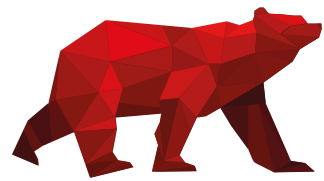
2) Never prop a door or gate open, even for a short time. This creates an unsecure environment.

3) We know custody arrangements sometimes change. Please let us know immediately so we can inform all staff and update our systems and ensure unauthorised people cannot access the setting.

4) If a non-authorized person is collecting your child as a one-off.

Please email the nursery from an email address registered to your account with their name and date of collection. We will email you a password, which must be given to the staff member upon collection with ID.





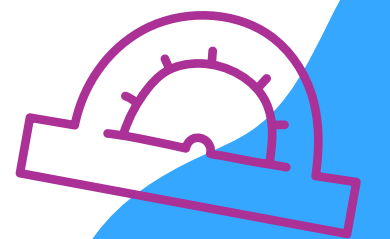
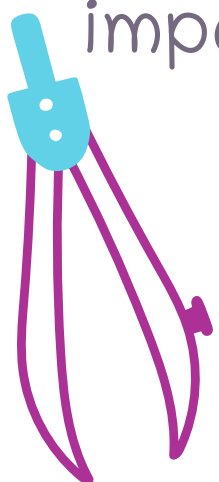
We all have a collective responsibility  
to keeping every child in our  
care safe, secure and protected.





# We Adhere to GDPR

Our signage is compliant, we have completed a data privacy impact assessment (DPIA), and we keep all data in accordance with GDPR.





# Learning Never Ends



If you see a potential security risk,  
or something that worries you,  
please let us know, confidentially.  
Be our extra eyes in keeping the nursery  
safe, secure and protected.

 **Call us:**

 **Email us:**

